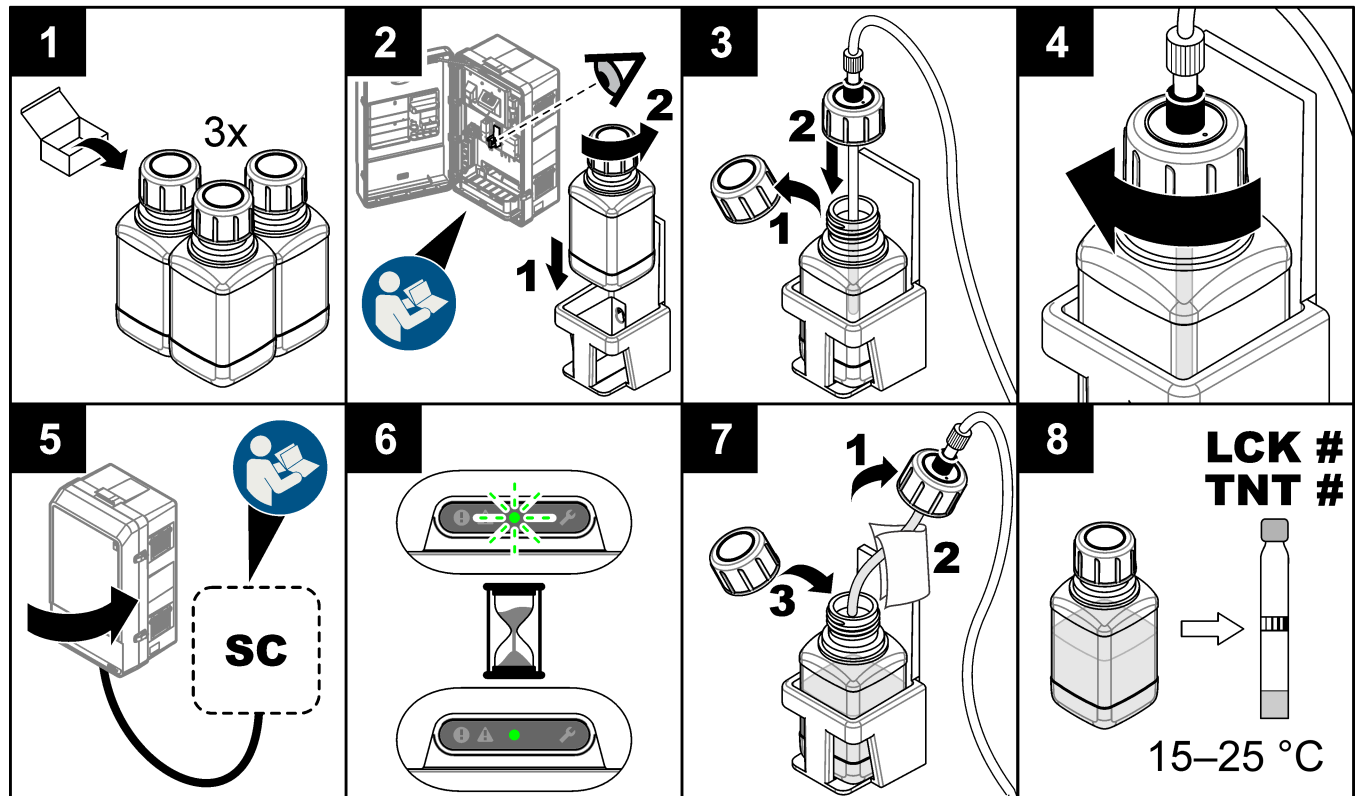


# LCW1090 Grab Sample and Validation Procedure

## Grab sample procedure

Refer to the illustrated steps that follow to complete a grab sample procedure.



Analyze the sample immediately after the procedure. If the sample cannot be analyzed within 2 hours, put the sample in a refrigerator at 2 to 5 °C (35.6 to 41 °F). Keep the refrigerated sample for a maximum of 4 hours. To select the applicable laboratory test for analysis, refer to [Table 1](#). To compare the laboratory measurements with the grab sample, follow the special instructions of the cuvette tests.

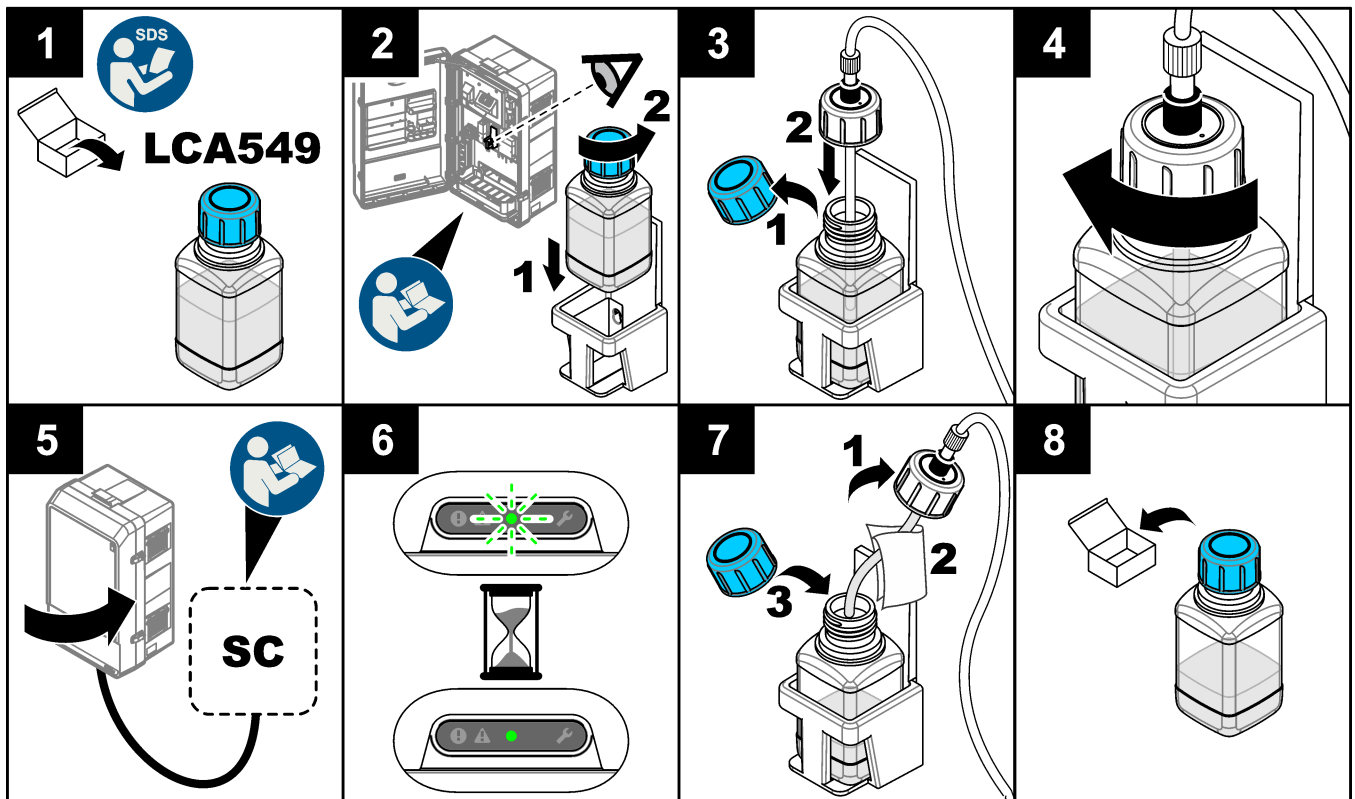
**Table 1 Cuvette tests**

Cuvette tests			NP6000sc measurement ranges (PO <sub>4</sub> -P mg/L)	
LCK #	TNT/HPT #	Range for PO <sub>4</sub> -P mg/L	Range 1 (0.015 to 5 mg/L)	Range 2 (0.05 to 15 mg/L)
LCK549	HPT487	0.01 to 0.5 mg/L	x	x
LCK349	TNT843	0.05 to 1.5 mg/L	x	x
LCK348	TNT844	0.5 to 5.0 mg/L	x	x
LCK350	TNT845	2.0 to 20.0 mg/L		x
LCK351	—	10 to 100 mg/L		

Example for Range 2 in [Table 1](#): If the grab sample result is 1 mg/L PO<sub>4</sub>-P, select a cuvette test within the measuring range. The recommended cuvette test in the example is LCK349/TNT843.

## Validation procedure

Refer to the illustrated steps that follow to complete a validation procedure. Use the supplied LCA549 for the validation measurement. Refer to [Table 2](#) for the test specifications.



**Table 2 LCA549 specifications**

Specification	Details
Concentration	0.2 mg/L PO <sub>4</sub> -P
Parameter	Phosphate
Quantity	100 mL
Storage conditions	15 to 25°C (59 to 77 °F)
Number of uses for NP6000sc measurements	5

**HACH COMPANY World Headquarters**  
P.O. Box 389, Loveland, CO 80539-0389 U.S.A.  
Tel. (970) 669-3050  
(800) 227-4224 (U.S.A. only)  
Fax (970) 669-2932  
orders@hach.com  
www.hach.com

**HACH LANGE GMBH**  
Willstätterstraße 11  
D-40549 Düsseldorf, Germany  
Tel. +49 (0) 2 11 52 88-320  
Fax +49 (0) 2 11 52 88-210  
info-de@hach.com  
www.de.hach.com

**HACH LANGE Sàrl**  
6, route de Compois  
1222 Vézenaz  
SWITZERLAND  
Tel. +41 22 594 6400  
Fax +41 22 594 6499

